

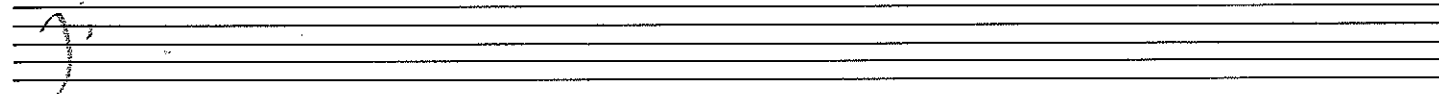
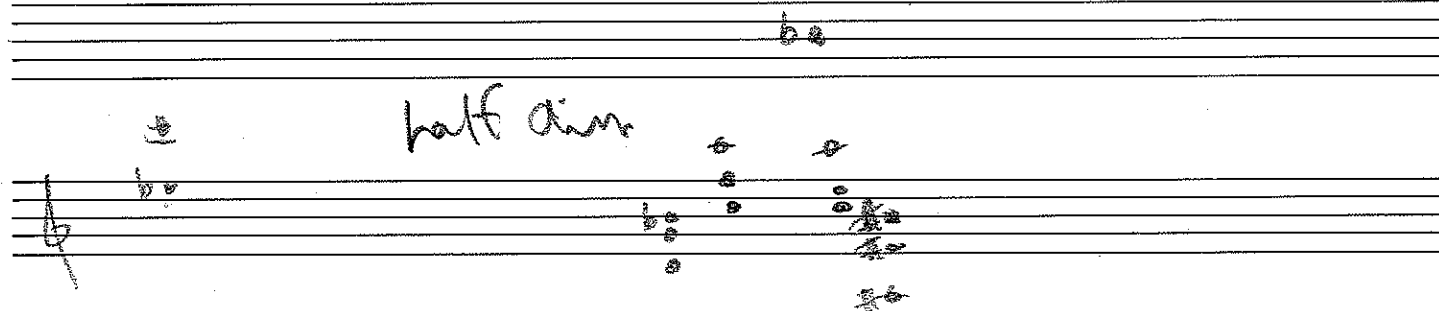
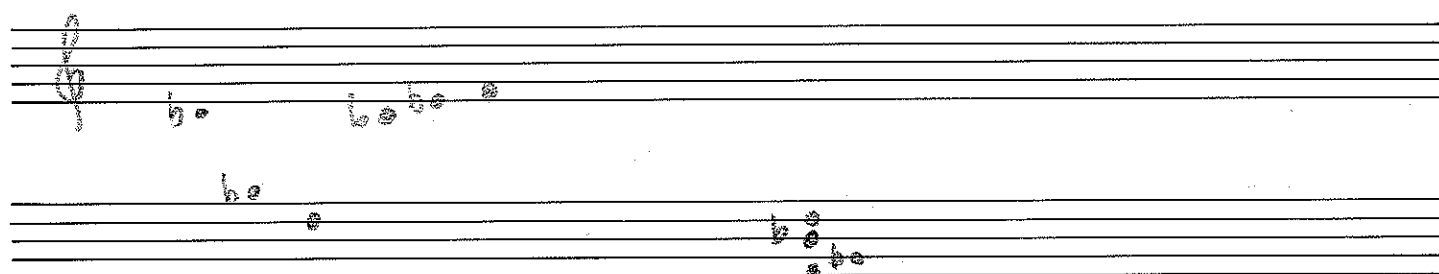
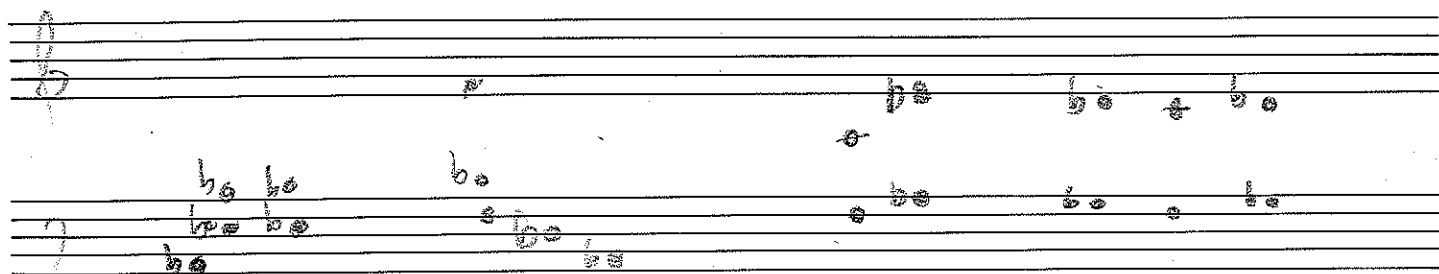
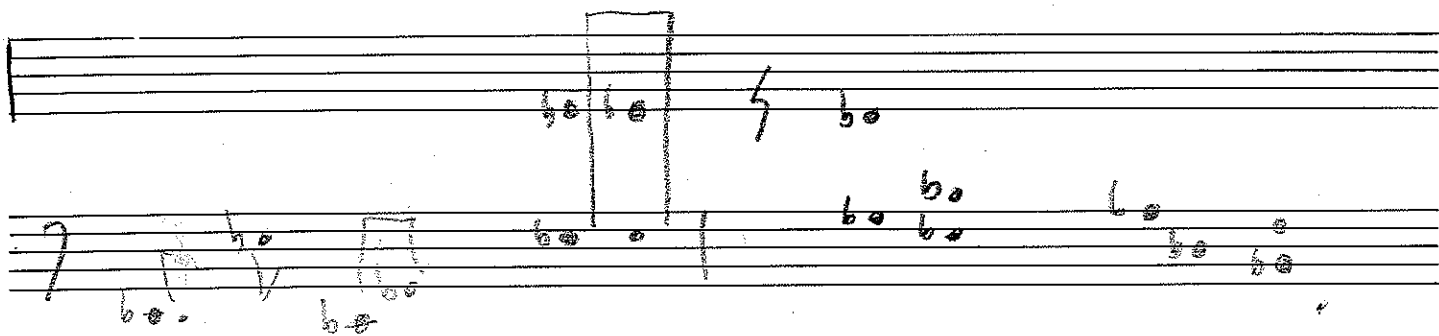
herbie And Midnight

Handwritten musical notation on a five-line staff. The notation includes various notes, rests, and accidentals. A large 'B' is written above the staff. A complex chord symbol is written below the staff: $\frac{A^{\flat} C \Delta 7 + 5}{A^{\flat}}$. To the right of this, 'D-7' is written. Below the staff, the notes E^{\flat} , D , D , F^{\sharp} , and F are written. The notation is somewhat messy and appears to be a rough sketch.

$B B 7 D^{\flat}$ A^{\flat} sus 9 7 alt F $E E^{\flat} D A^{\flat}$

Handwritten musical notation on a five-line staff. It includes notes and accidentals, with some notes grouped together. The notation is somewhat messy and appears to be a rough sketch.

Handwritten musical notation on a five-line staff. It includes notes and accidentals, with some notes grouped together. The notation is somewhat messy and appears to be a rough sketch.



9 alt

Handwritten musical notation on the left page, featuring various notes, rests, and accidentals. Includes circled letters (a) and (b) above the staff, and the text "F-11" written to the right of the staff.

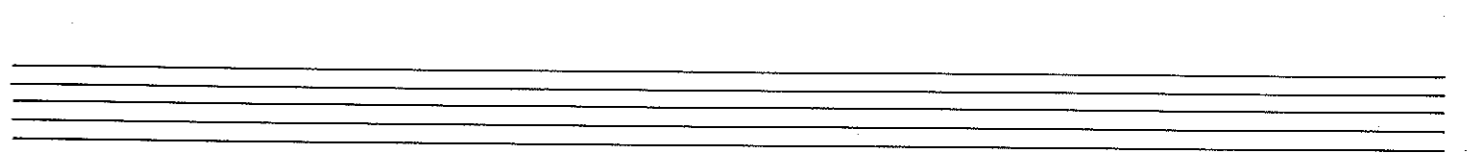
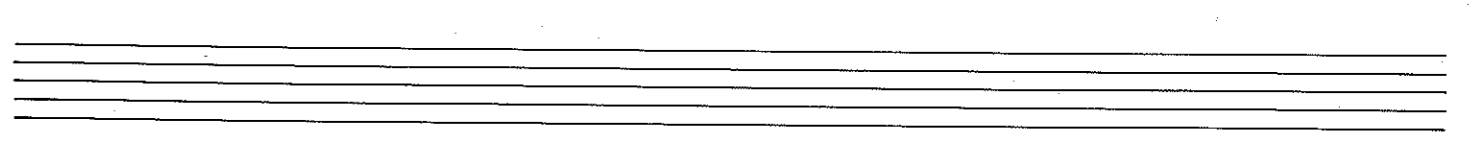
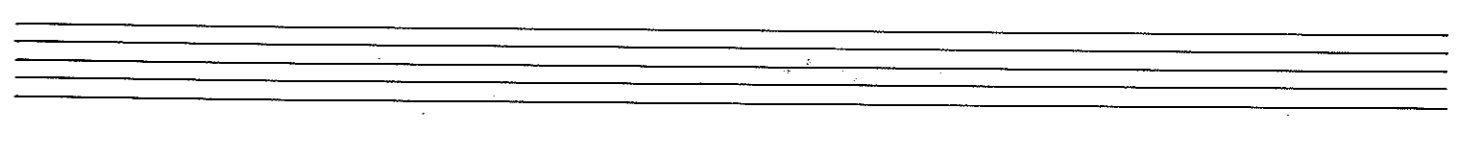
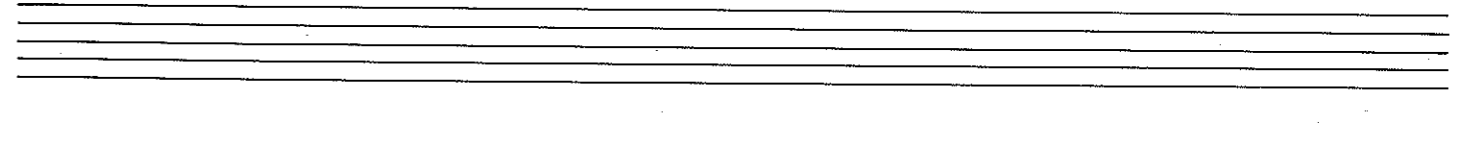
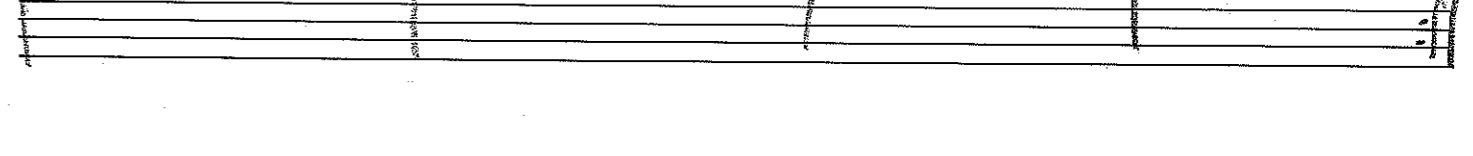
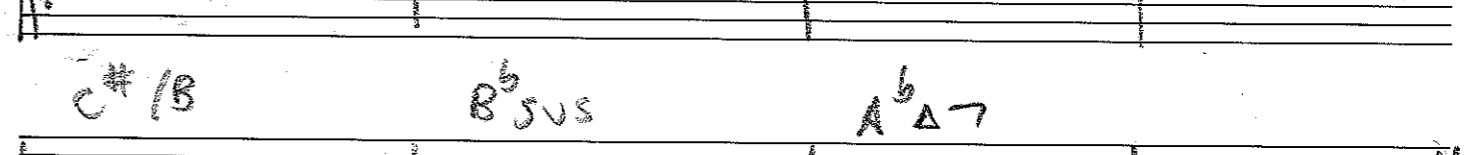
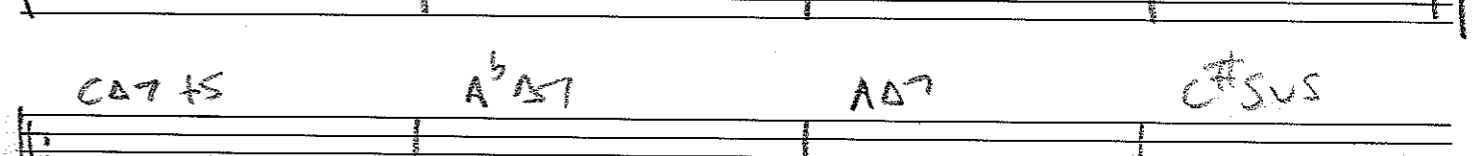
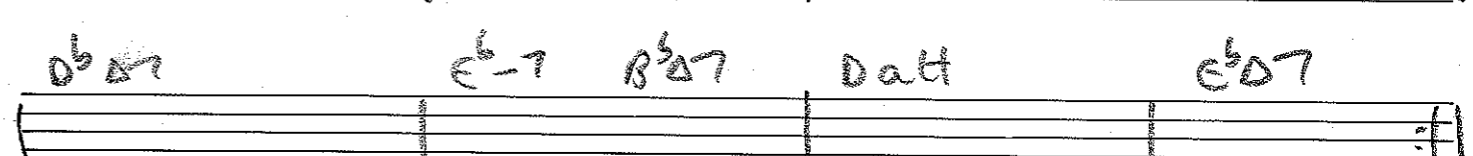
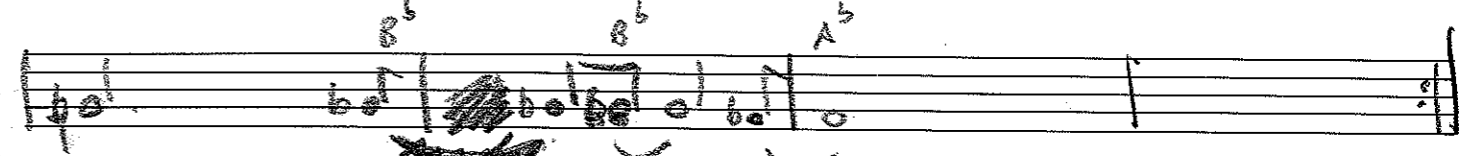
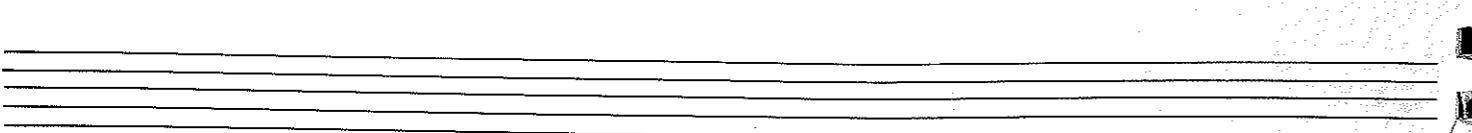
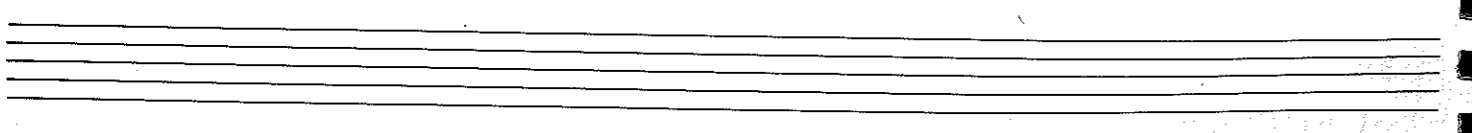
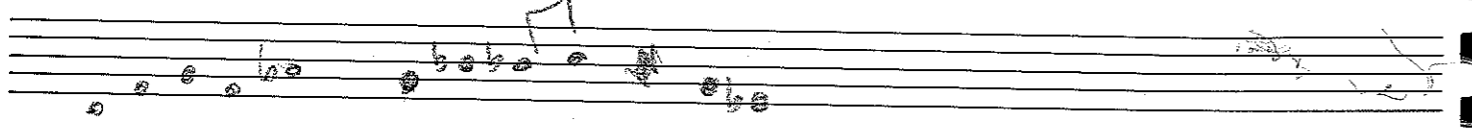
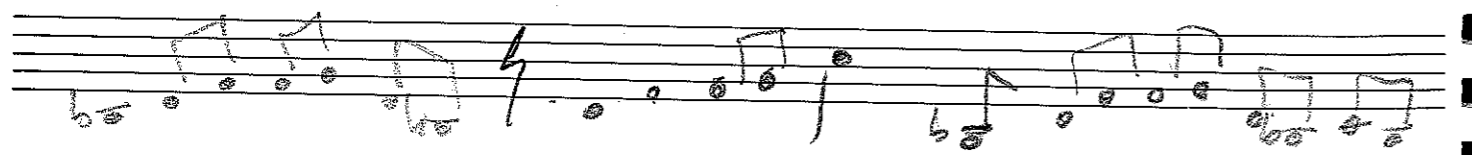
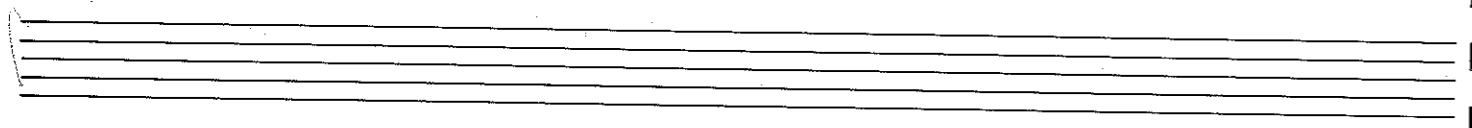
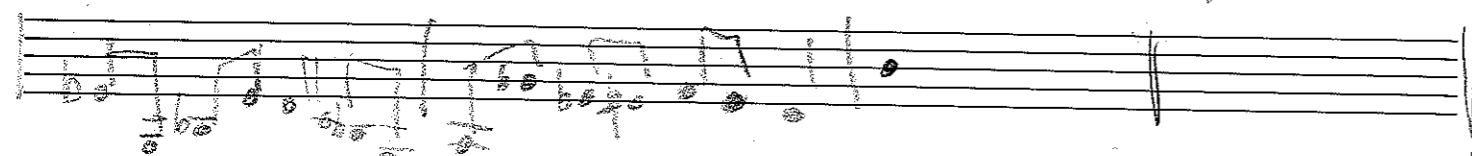
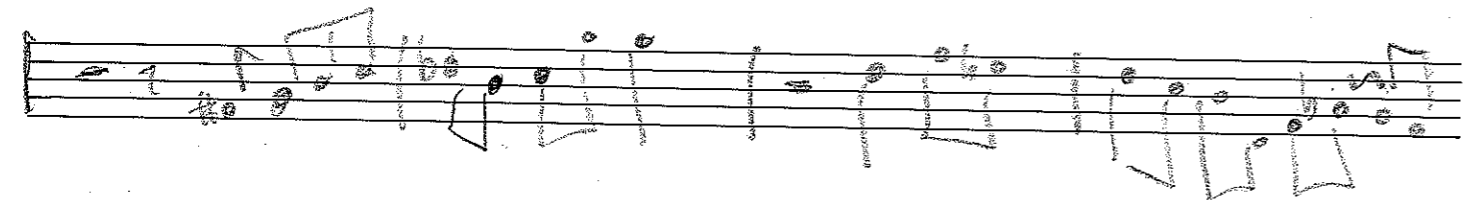
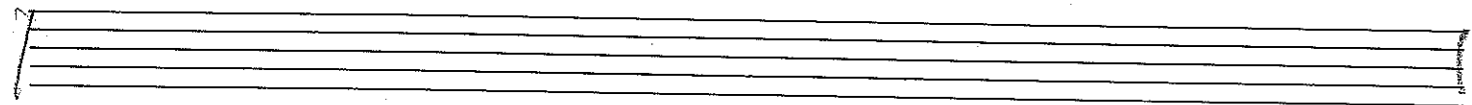
22 nov 94

Handwritten musical notation on the left page, featuring a sequence of notes with flat accidentals. Includes circled letters (a) and (b) above the staff.

BLUE 'N' BOOGIE

Handwritten musical notation on the right page, featuring various notes, rests, and accidentals. Includes the word "Bird" written above the staff in the upper right corner.

COQ AU CHECKIT CHICKEN



#0 #0 #0
#0 #0 #0
#0 #0 #0

b0
b0 a o o b0
o o #0 o

b0

b0
b0 a o o b0
o o #0 o

b0
b0 a o o b0
o o #0 o

carnot bal
b0 a o o b0 b0 b0
o b0 b0 #0 o #0 #0 b0 b0

b0 b0

George col new lick KARNDUW

b0 b0 b0 b0 b0 b0 b0 b0 b0

b0 b0 b0 b0 b0 b0 b0 b0 b0

b0 b0 b0 b0 b0 b0 b0 b0 b0
b0 b0 b0 b0 b0 b0 b0 b0 b0
b0 b0 b0 b0 b0 b0 b0 b0 b0

b0
b0
b0
b0

Bermagu:

b0

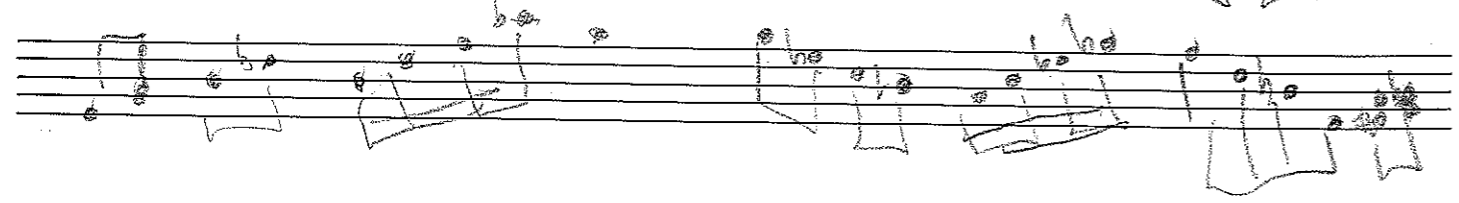
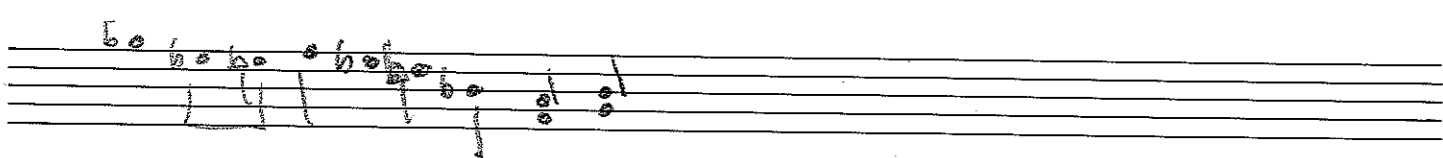
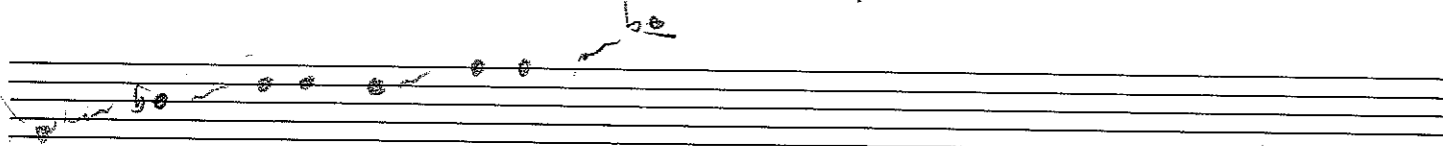
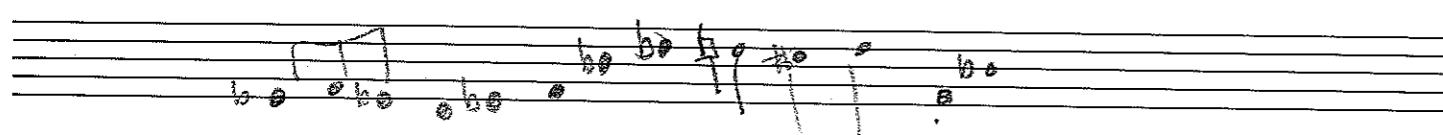
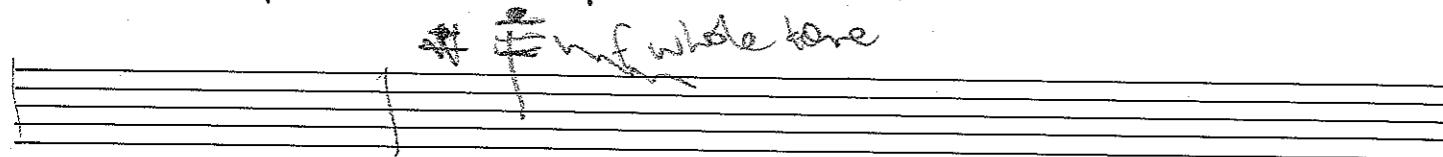
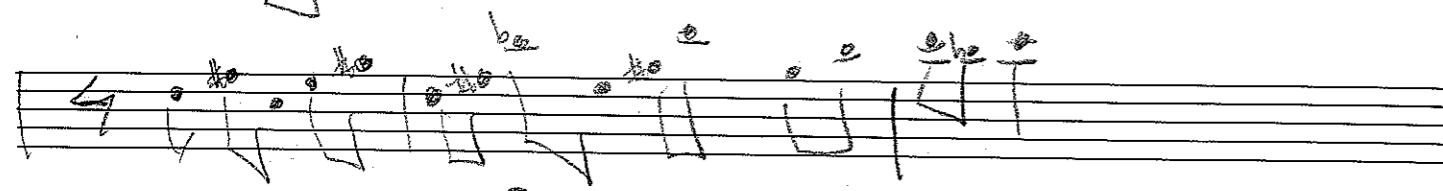
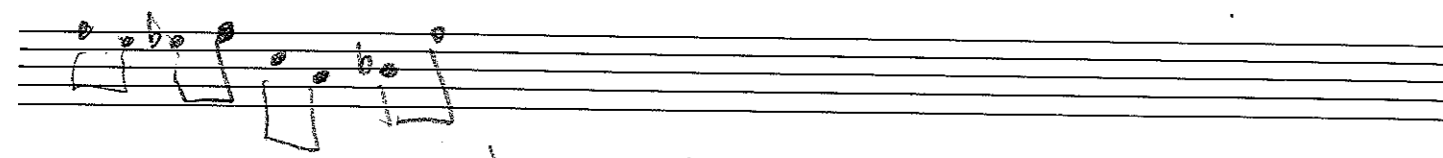
x

Handwritten musical notation on the left page, featuring several staves with notes and accidentals. The notation includes various chord symbols and melodic lines, such as b_0 , b_1 , b_2 , b_3 , b_4 , b_5 , b_6 , b_7 , b_8 , b_9 , b_{10} , b_{11} , b_{12} , b_{13} , b_{14} , b_{15} , b_{16} , b_{17} , b_{18} , b_{19} , b_{20} , b_{21} , b_{22} , b_{23} , b_{24} , b_{25} , b_{26} , b_{27} , b_{28} , b_{29} , b_{30} , b_{31} , b_{32} , b_{33} , b_{34} , b_{35} , b_{36} , b_{37} , b_{38} , b_{39} , b_{40} , b_{41} , b_{42} , b_{43} , b_{44} , b_{45} , b_{46} , b_{47} , b_{48} , b_{49} , b_{50} , b_{51} , b_{52} , b_{53} , b_{54} , b_{55} , b_{56} , b_{57} , b_{58} , b_{59} , b_{60} , b_{61} , b_{62} , b_{63} , b_{64} , b_{65} , b_{66} , b_{67} , b_{68} , b_{69} , b_{70} , b_{71} , b_{72} , b_{73} , b_{74} , b_{75} , b_{76} , b_{77} , b_{78} , b_{79} , b_{80} , b_{81} , b_{82} , b_{83} , b_{84} , b_{85} , b_{86} , b_{87} , b_{88} , b_{89} , b_{90} , b_{91} , b_{92} , b_{93} , b_{94} , b_{95} , b_{96} , b_{97} , b_{98} , b_{99} , b_{100} .

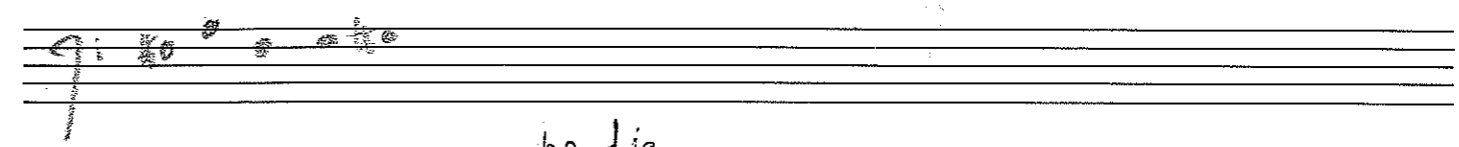
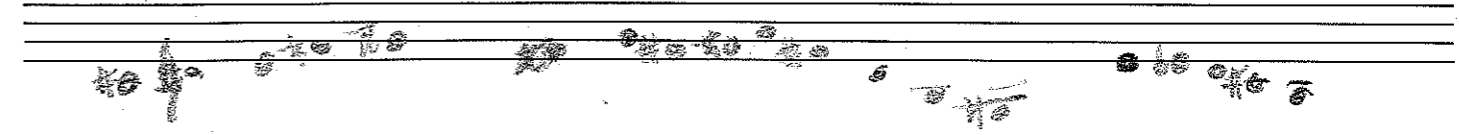
$c^\#$ - c alt B - G alt $F^\#$ - E - G/C C/F E

BUD POWELL BLUE 'N' BOOGIE

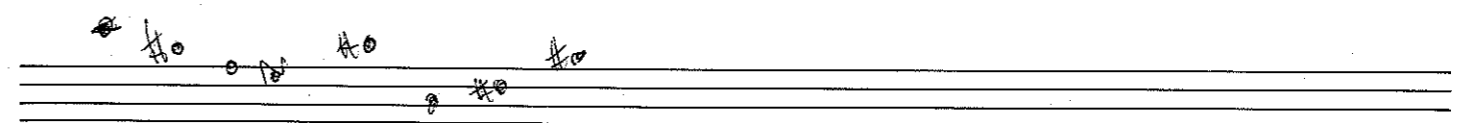
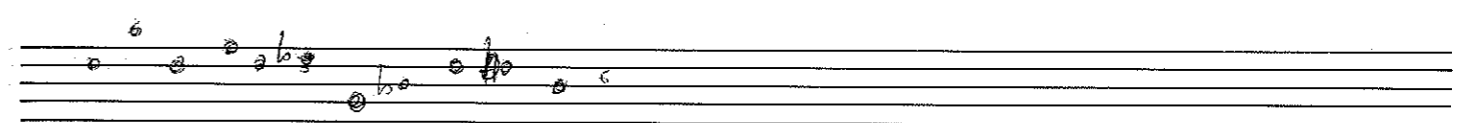
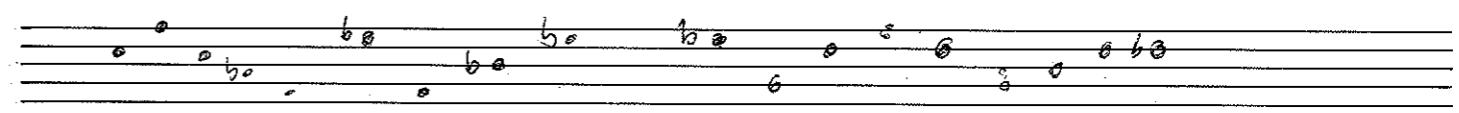
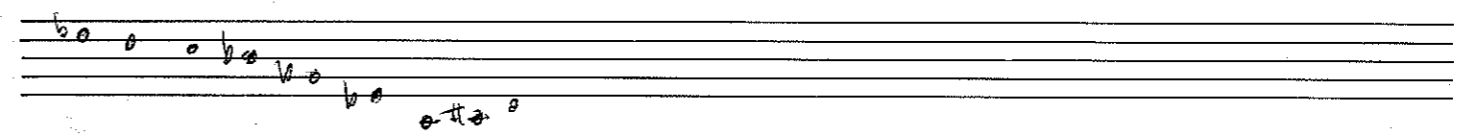
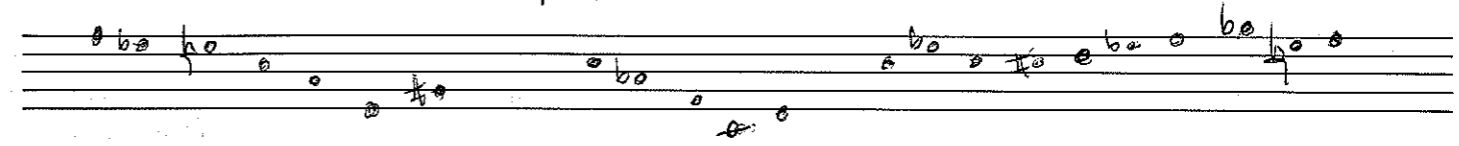
Handwritten musical notation on the right page, featuring several staves with notes and accidentals. The notation includes various chord symbols and melodic lines, such as b_0 , b_1 , b_2 , b_3 , b_4 , b_5 , b_6 , b_7 , b_8 , b_9 , b_{10} , b_{11} , b_{12} , b_{13} , b_{14} , b_{15} , b_{16} , b_{17} , b_{18} , b_{19} , b_{20} , b_{21} , b_{22} , b_{23} , b_{24} , b_{25} , b_{26} , b_{27} , b_{28} , b_{29} , b_{30} , b_{31} , b_{32} , b_{33} , b_{34} , b_{35} , b_{36} , b_{37} , b_{38} , b_{39} , b_{40} , b_{41} , b_{42} , b_{43} , b_{44} , b_{45} , b_{46} , b_{47} , b_{48} , b_{49} , b_{50} , b_{51} , b_{52} , b_{53} , b_{54} , b_{55} , b_{56} , b_{57} , b_{58} , b_{59} , b_{60} , b_{61} , b_{62} , b_{63} , b_{64} , b_{65} , b_{66} , b_{67} , b_{68} , b_{69} , b_{70} , b_{71} , b_{72} , b_{73} , b_{74} , b_{75} , b_{76} , b_{77} , b_{78} , b_{79} , b_{80} , b_{81} , b_{82} , b_{83} , b_{84} , b_{85} , b_{86} , b_{87} , b_{88} , b_{89} , b_{90} , b_{91} , b_{92} , b_{93} , b_{94} , b_{95} , b_{96} , b_{97} , b_{98} , b_{99} , b_{100} .



Joe



herbie



Handwritten musical notation on two staves. The notation includes various notes, rests, and accidentals (sharps, flats, naturals). Above the staves, there are handwritten notes: "90 BUR 90 90 f-e7" and "9505".

Handwritten musical notation on two staves. The notation includes various notes, rests, and accidentals (sharps, flats, naturals).

Handwritten musical notation on two staves. The notation includes various notes, rests, and accidentals (sharps, flats, naturals). A large bracket is drawn across the staves, spanning several measures.

Handwritten musical notation on two staves. The notation includes various notes, rests, and accidentals (sharps, flats, naturals).

Handwritten musical notation on two staves. The notation includes various notes, rests, and accidentals (sharps, flats, naturals).

Handwritten musical notation on two staves. The notation includes various notes, rests, and accidentals (sharps, flats, naturals). The word "AD" is written at the end of the notation.

Handwritten musical notation on two staves. The notation includes various notes, rests, and accidentals (sharps, flats, naturals).

Handwritten musical notation on two staves. The notation includes various notes, rests, and accidentals (sharps, flats, naturals).

Handwritten musical notation on two staves. The notation includes various notes, rests, and accidentals (sharps, flats, naturals).

Handwritten musical notation on two staves. The notation includes various notes, rests, and accidentals (sharps, flats, naturals).

Handwritten musical notation on a five-line staff. It features various notes, including whole, half, and quarter notes, with many accidentals (sharps and flats) and some ties. The notation is somewhat sparse and appears to be a sketch or a specific part of a larger composition.

Handwritten musical notation on a five-line staff, continuing the style of the first system. It includes notes with accidentals and some rests.

Handwritten musical notation on a five-line staff. This system includes a large 'X' mark above the staff, possibly indicating a correction or a specific section. The notation consists of notes with various accidentals.

Handwritten musical notation on a five-line staff. Above the staff, there are handwritten notes: $D-D/F$, E^b-A/F^{\sharp} , $\times \times$, $F^{\sharp}7^{+4}/E$, $C\Delta 7+5b9$, E^balt , $A^b\Delta 7$, and C/B^b . The notation below includes notes with accidentals and some ties.

Handwritten musical notation on a five-line staff. Above the staff, there are handwritten notes: $C^{\sharp}7b9$, B^b-7b6 , B^b-7b6 , $A-7b6$, C^{\sharp}/B , $A\Delta 7$, $C13^{+9}$, and $B^b\Delta 7$. The notation below includes notes with accidentals and some ties.

Handwritten musical notation on a five-line staff. Above the staff, there are handwritten notes: B/F^{\sharp} and F/C . The notation below includes notes with accidentals and some ties.

Handwritten musical notation on a five-line staff. It features notes with various accidentals and some ties. There is a large 'X' mark above the staff, similar to the one in the first system on the left.

Handwritten musical notation on a five-line staff. It includes notes with various accidentals and some ties.

Handwritten musical notation on a five-line staff. It includes notes with various accidentals and some ties.

Handwritten musical notation on a five-line staff. It includes notes with various accidentals and some ties.

Handwritten musical notation on a five-line staff. It includes notes with various accidentals and some ties.

2

$\frac{b_0}{R} A^b -$
 $b_0 \frac{1}{2}(c)$

7 40
20
30

[illegible]

NAME _____

ADDRESS _____

CITY _____

STATE _____

ZIP _____

[illegible]

footprints

The image shows a handwritten musical score for the song 'Footprints'. The title 'Footprints' is written in a simple, cursive font above the top staff. The music is written on two staves. The top staff is in treble clef and the bottom staff is in bass clef. The key signature is one sharp (F#), indicating G major. The melody is written in a simple, child-friendly style, using quarter and eighth notes. The rhythm is simple, with a 4/4 time signature. The notes are written in a way that is easy to read and play.


7

Handwritten musical notation on three staves. The notation includes various notes, rests, and accidentals (flats and naturals). The first staff has a whole note with a flat, a half note with a flat, and a whole note with a flat. The second staff has a whole note with a flat, a half note with a flat, and a whole note with a flat. The third staff has a whole note with a flat, a half note with a flat, and a whole note with a flat.

A blank musical staff with a treble clef and three binder holes on the left.

7 9

[illegible][illegible]

 I

RH YTHM.

M

B^b C[#]7 F[#]Δ7 A7 DΔ7 F7 B^b

A^b - D^b F[#] B E - A7 D - G ~~C[#]7~~ ~~A7~~

C[#]7 D^b7 F[#] A7 DΔ7 F7 B^b

Alterante Bridge

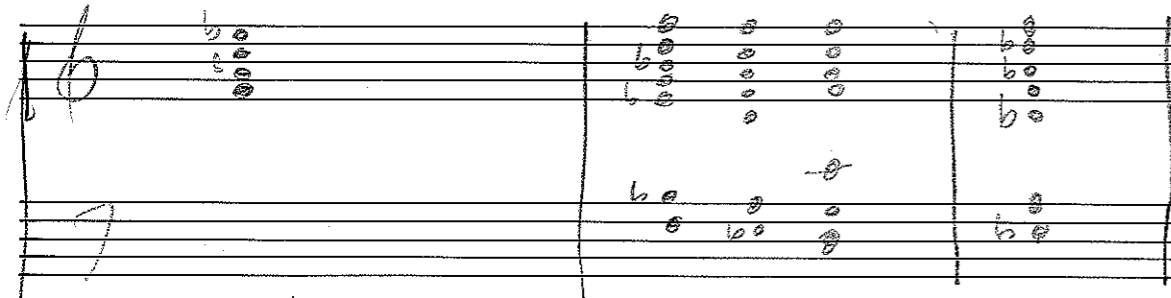
external
trian ~~B^b~~

B - E7 | B^b - E^b7 | A - 7 D7
A^b - D^b7

G - 7 C7

F[#] - 7 B7

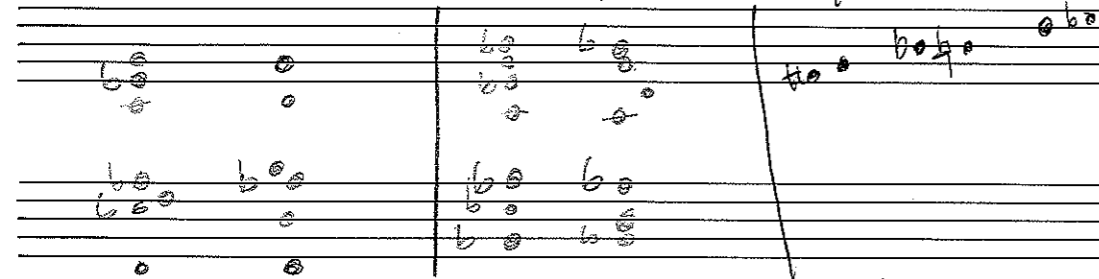
Falt.



F - B^b7

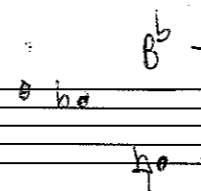
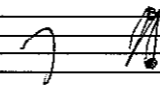
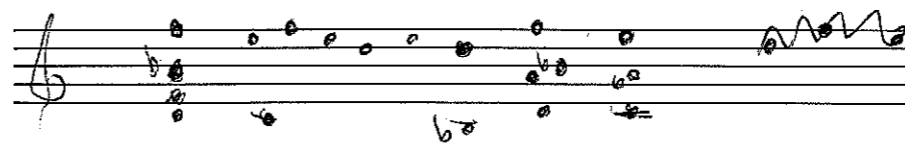
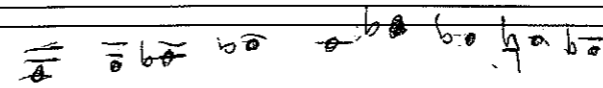
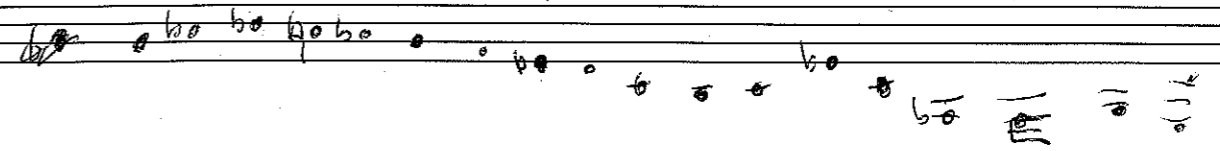
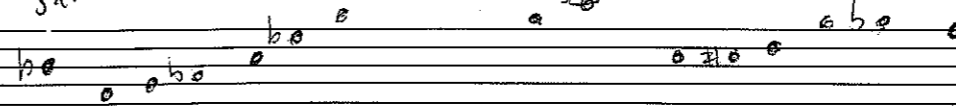
C7 F7

giant steps comps

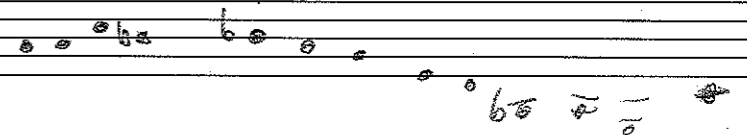


Shift A -

B^b7



Freddie C7



Handwritten musical notation on a five-line staff. It includes various notes, accidentals (sharps, flats, naturals), and a double bar line. The notation is somewhat sparse and appears to be a sketch or a specific part of a larger piece.

Handwritten musical notation on a five-line staff, continuing the piece. It features notes, accidentals, and a double bar line. The notation is consistent with the previous staff, showing a continuation of the musical ideas.

Handwritten musical notation on a five-line staff, showing a few notes and accidentals, possibly a continuation or a separate section.

Handwritten musical notation on a five-line staff, including notes, accidentals, and a double bar line. The notation is consistent with the previous staves.

Handwritten musical notation on a five-line staff, featuring notes, accidentals, and a double bar line. The notation is consistent with the previous staves.

TAG "JOES BLUES"

Handwritten musical notation on a five-line staff. It includes a key signature change to F# (indicated by a sharp sign and an arrow), a time signature of 4/4, and a double bar line. The notation is consistent with the previous staves.

Handwritten musical notation on a five-line staff, featuring notes, accidentals, and a double bar line. The notation is consistent with the previous staves.

Handwritten musical notation on a five-line staff, featuring notes, accidentals, and a double bar line. The notation is consistent with the previous staves.

Handwritten musical notation on a five-line staff, featuring notes, accidentals, and a double bar line. The notation is consistent with the previous staves.

Handwritten musical notation on a five-line staff, featuring notes, accidentals, and a double bar line. The notation is consistent with the previous staves.

Handwritten musical notation on a five-line staff, featuring notes, accidentals, and a double bar line. The notation is consistent with the previous staves.

907 D-1C C-1B³ 44F- 5-

$$F_{\Delta 7}^{\#} \quad \in b_{\Delta 7} \text{ sus}$$

A^b7 b9

D^bΔ

F7

Musical notation on a grand staff (treble and bass clefs). The first system contains several chords and notes, including A^b7 b9, D^bΔ, and F7. The second system continues the notation with various notes and accidentals.

Musical notation on a single staff, showing a sequence of notes with various accidentals.

Musical notation on a grand staff. The first system contains several chords and notes, including A^b7 b9, D^bΔ, and F7. The second system continues the notation with various notes and accidentals.

Musical notation on a single staff, showing a sequence of notes with various accidentals.

Musical notation on a single staff, showing a sequence of notes with various accidentals.

E^b

A7

D-

B-

Musical notation on a single staff, showing a sequence of notes with various accidentals.

B^bΔ F[#]/A^b F[#]- G- B^b- C F[#]-

Musical notation on a single staff, showing a sequence of notes with various accidentals.

E^bA C- B^b- A- D7 GΔ7 E-

Musical notation on a single staff, showing a sequence of notes with various accidentals.

E^b- ~~A^b~~ A^balt A^bSUS C-b6 CΔ7 BΔ7

Musical notation on a single staff, showing a sequence of notes with various accidentals.

BΔ7 F[#]-

Musical notation on a single staff, showing a sequence of notes with various accidentals.

#0 70

Musical notation on a single staff, showing a sequence of notes with various accidentals.

8

Musical notation on a single staff, showing a sequence of notes with various accidentals.

#8

\flat 4

n J. h.

drop 2 \rightarrow Δ

n J 4

\flat 4

\flat 4

bas,

Handwritten musical notation on two staves. The notation includes various notes, rests, and accidentals (sharps, flats, naturals).

Handwritten musical notation on two staves, continuing the piece.

Handwritten musical notation on two staves, including a measure with a flat and a sharp.

Handwritten musical notation on two staves. The notation includes a measure with a flat and a sharp.

Handwritten musical notation on two staves, including a measure with a flat and a sharp.

Handwritten musical notation on two staves, including a measure with a flat and a sharp.

Handwritten musical notation on two staves, including a measure with a flat and a sharp.

Bass *

PROCESSION

Handwritten musical notation on two staves. The notation includes various notes, rests, and accidentals (sharps, flats, naturals).

Handwritten musical notation on two staves. The notation includes various notes, rests, and accidentals (sharps, flats, naturals).

Handwritten musical notation on two staves. The notation includes various notes, rests, and accidentals (sharps, flats, naturals).

Handwritten musical notation on two staves. The notation includes various notes, rests, and accidentals (sharps, flats, naturals).

Handwritten musical notation on two staves. The notation includes various notes, rests, and accidentals (sharps, flats, naturals).

Handwritten musical notation on two staves. The notation includes various notes, rests, and accidentals (sharps, flats, naturals).

Handwritten musical notation on the left page, featuring guitar chords and melodic lines. The notation includes:

- Chords: $CA7$, $B-7$, $B-7^b6$, $B-/E$, B/E , B^b-II , $C-II$, $GA7$, $F^b(b6)$, F^b/B , F^b/B , B^b-II , $C-II$.
- Musical elements: Melodic lines with notes, rests, and accidentals. A section labeled "Procession" is marked.
- Annotations: "8va", "C-II", "2", "7", "to top last head", "ASUS (add3 no7)", "F^b/E", "G/C", "C^b-II", "GA7", "ASUS".

Handwritten musical notation on the right page, featuring guitar chords and melodic lines. The notation includes:

- Chords: $GA7$, $F^b(b6)$, F^b/B , F^b/B , B^b-II , $C-II$, $ASUS$, $ASUS$, $ASUS$, $ASUS$, $GA7$, $ASUS$, F^b/E , $CA7$, C^b-II , $GA7$, $ASUS$, $GA7$, $ASUS$, $GA7$, $F^b(b6)$, F^b/B , F^b/B , B^b-II , $C-II$.
- Musical elements: Melodic lines with notes, rests, and accidentals. A section labeled "Solos" is marked.
- Annotations: "ASUS 24", "ASUS 8 bars", "ASUS 4 bars", "to \$ after solos".

(A)

Black pyramid

BASS

(B)

(C)

F7

Little Jimmy

concert

GUITAR

(B)

(7)

beats

3

C pentatonic

F# / F

D^b / A^b

1 AΔ7 / E

2 AΔ7 / E

E^bΔ7

F/A

F/A

G-

G-

B^bΔ7

B^bΔ7

E^b6

F

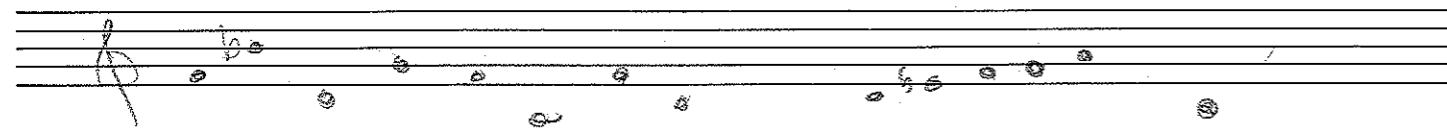
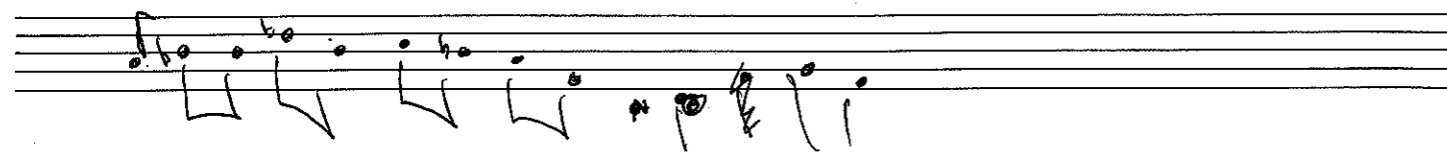
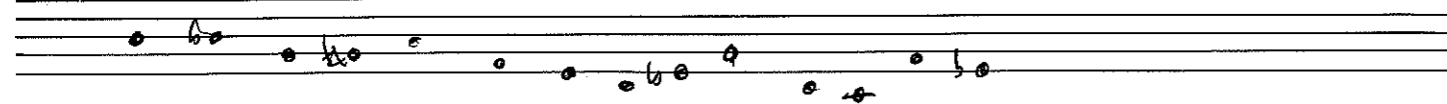
A^b / G

B^b7+11 / C

BΔ7 / F⁷

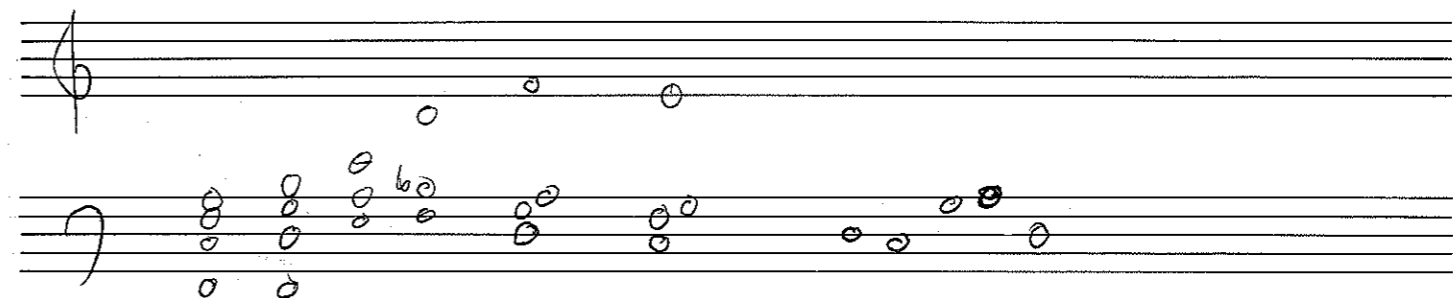
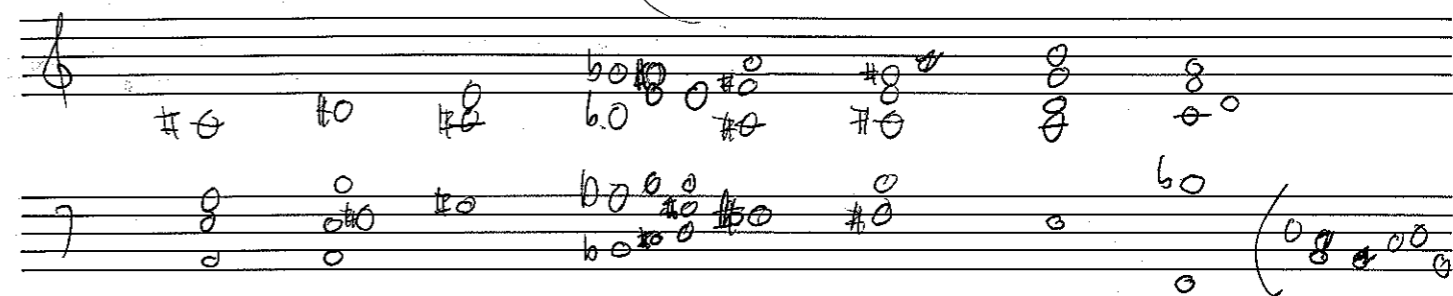
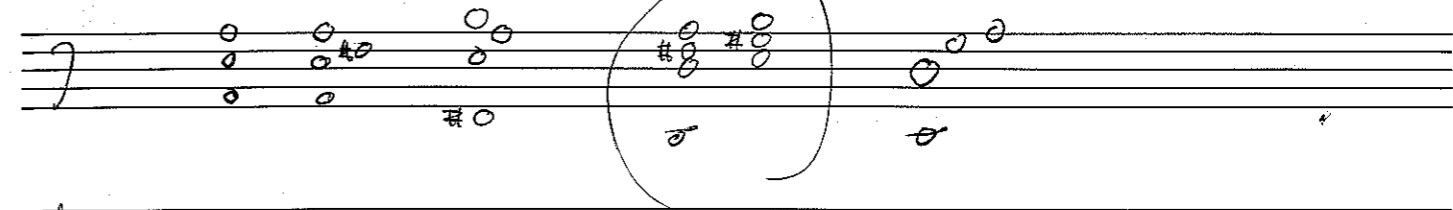
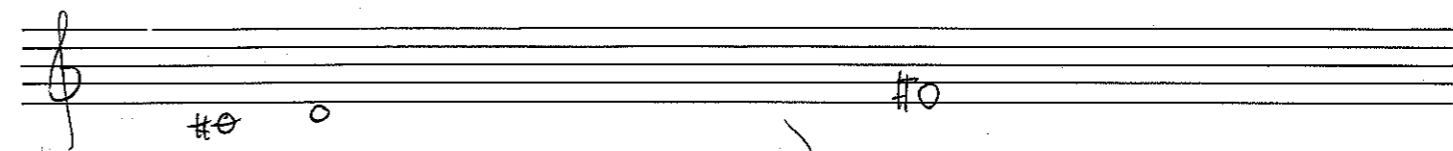
CΔ7

A7 lick tricks



E^b A7

A^b A7



Blues Junk

N

Handwritten musical notation for the first system of "Blues Junk". It features a treble clef and a key signature of one flat. The notation includes a series of notes and rests, with a "P7" chord symbol written above the staff.

Herb

Handwritten musical notation for the second system of "Blues Junk", continuing the melody from the first system.

Handwritten musical notation for the third system of "Blues Junk", featuring a treble clef and a key signature of one flat.

Handwritten musical notation for the fourth system of "Blues Junk". It includes a treble clef, a key signature of one flat, and a "left hand" annotation. The notation is divided into two measures by a vertical line, with a "turnaround" annotation above the second measure.

Handwritten musical notation for the fifth system of "Blues Junk", featuring a treble clef and a key signature of one flat.

Handwritten musical notation for the sixth system of "Blues Junk", featuring a treble clef and a key signature of one flat.

Handwritten musical notation for the seventh system of "Blues Junk". It includes a treble clef, a key signature of one flat, and a "Dart" annotation above the staff.

Handwritten musical notation for the eighth system of "Blues Junk". It features a treble clef, a key signature of one flat, and a "P7" chord symbol above the staff.

Herbie blues

3

Handwritten musical notation for the first system of "Herbie blues". It features a treble clef and a key signature of one flat, with a triplet of eighth notes indicated by a "3" above the staff.

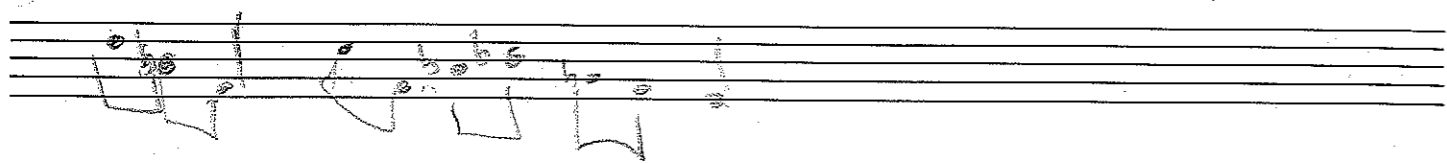

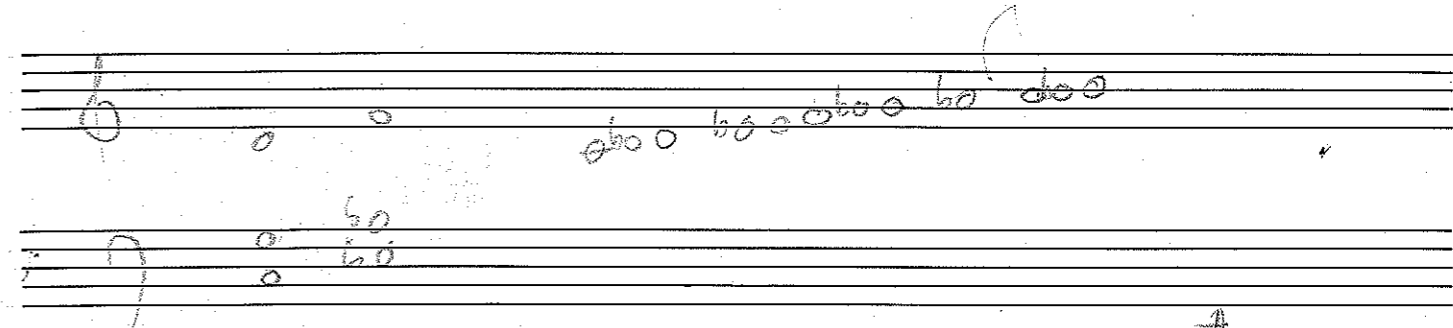
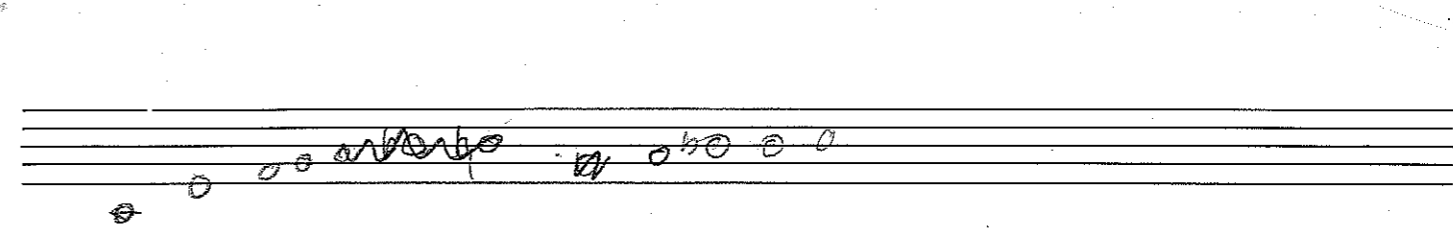
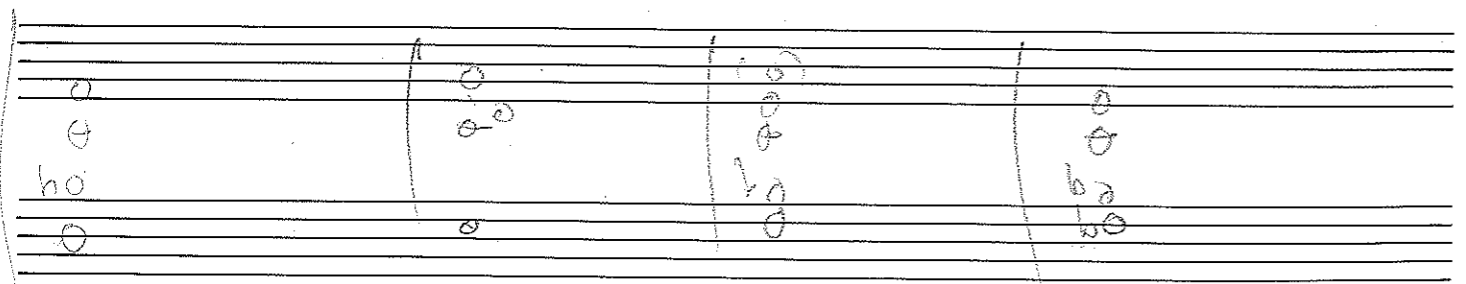
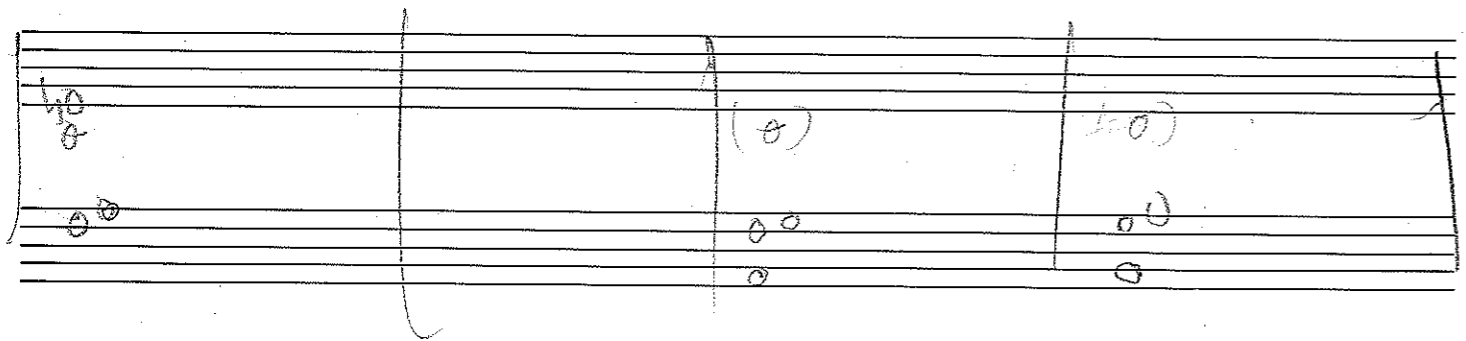
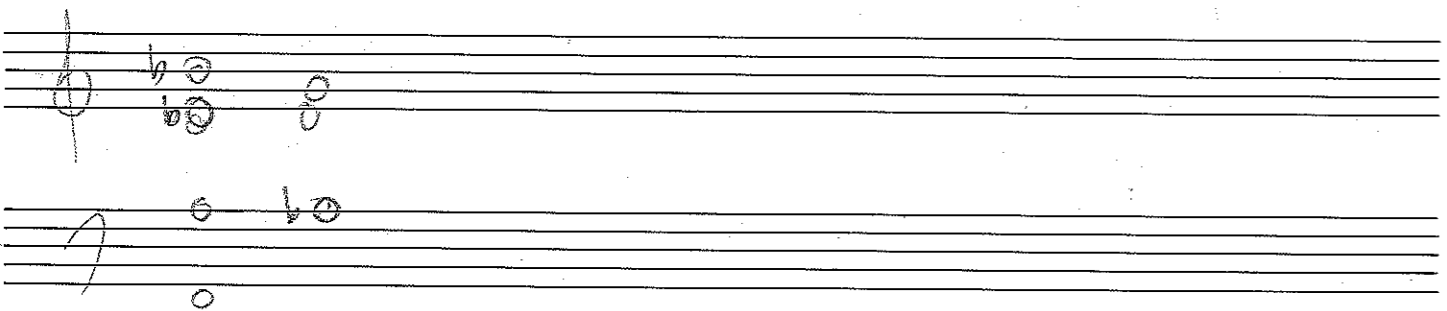
Handwritten musical notation for the second system of "Herbie blues". It includes a treble clef, a key signature of one flat, and a "P7" chord symbol above the staff.

Handwritten musical notation for the third system of "Herbie blues". It features a treble clef, a key signature of one flat, and a "P7" chord symbol above the staff.

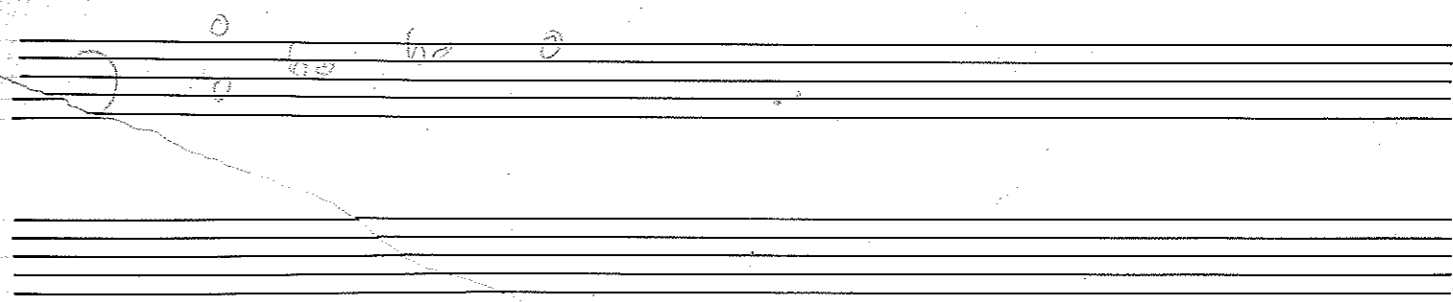
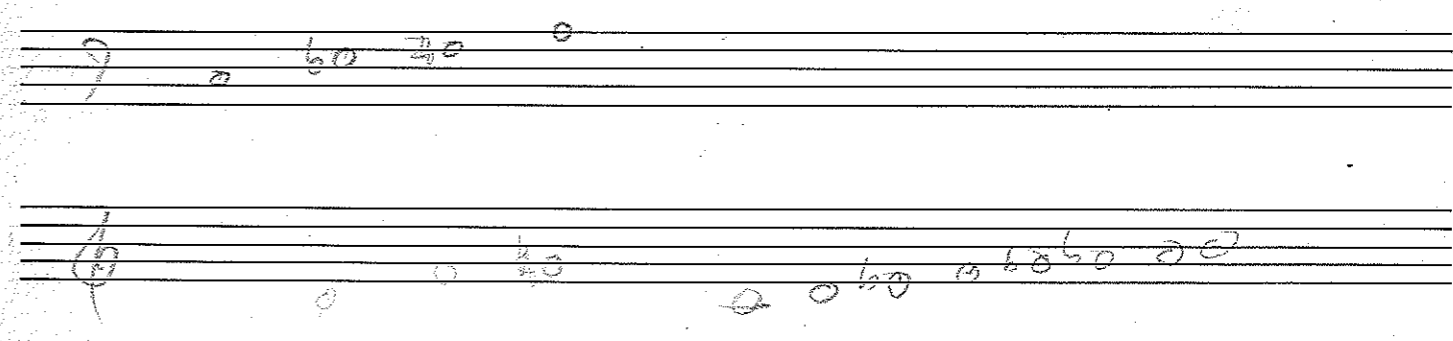
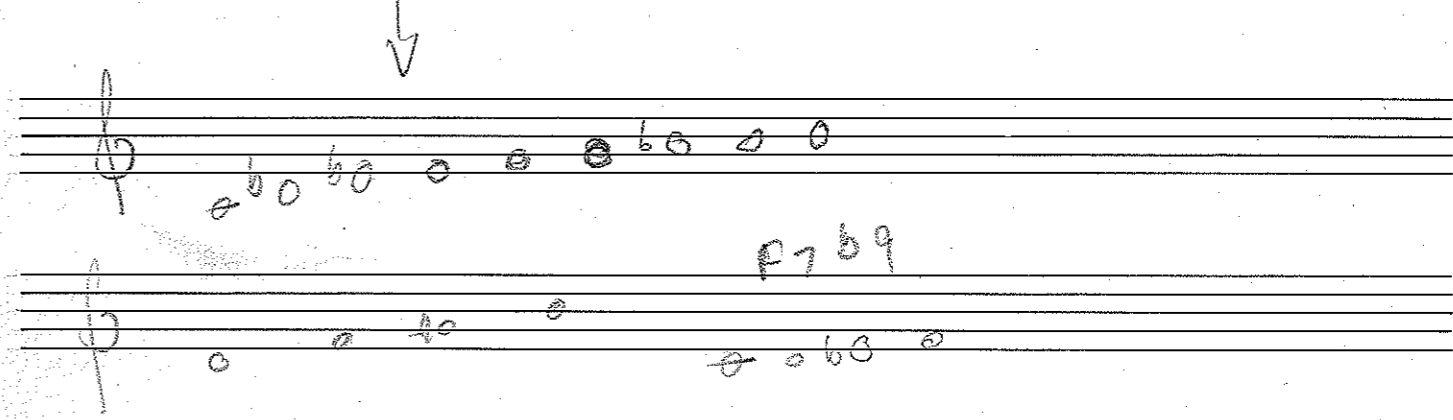
Handwritten musical notation for the fourth system of "Herbie blues". It includes a treble clef, a key signature of one flat, and a "P7" chord symbol above the staff.

Handwritten musical notation for the fifth system of "Herbie blues". It features a treble clef, a key signature of one flat, and a "P7" chord symbol above the staff.

Kennylick 27

[illegible]

Handwritten musical notation on a five-line staff. The first measure contains a treble clef and a whole note C₄. The second measure contains a whole note D₄. The third measure contains a whole note E₄. The fourth measure contains a whole note F[#]₄. The fifth measure contains a whole note G₄. The sixth measure contains a whole note A₄. The seventh measure contains a whole note B₄. The eighth measure contains a whole note C₅. Above the staff, there are handwritten notes: "no A" above the third measure, "no E#" above the fourth measure, and "no F" above the fifth measure. Below the staff, there are handwritten notes: "C₄" below the first measure, "D₄" below the second measure, "E₄" below the third measure, "F[#]₄" below the fourth measure, "G₄" below the fifth measure, "A₄" below the sixth measure, "B₄" below the seventh measure, and "C₅" below the eighth measure.



Handwritten musical notation on a five-line staff. It begins with a treble clef and a '7' time signature. The notation consists of several whole notes with various accidentals (sharps, flats, and naturals) scattered across the staff.

Handwritten musical notation on a five-line staff, continuing the sequence of notes with accidentals from the previous staff.

Handwritten musical notation on a five-line staff, featuring a treble clef and a series of notes with accidentals.

Handwritten musical notation on a five-line staff, continuing the musical sequence.

Handwritten musical notation on a five-line staff, featuring a treble clef and notes with accidentals.

Handwritten musical notation on a five-line staff, continuing the musical sequence.

Handwritten musical notation on a five-line staff, featuring a treble clef and notes with accidentals.

Handwritten musical notation on a five-line staff, featuring a treble clef and notes with accidentals.

Handwritten musical notation on a five-line staff, featuring a treble clef and notes with accidentals.

Handwritten musical notation on a five-line staff, featuring a treble clef and notes with accidentals.

Handwritten musical notation on a five-line staff, featuring a treble clef and notes with accidentals.

WIDAK 2 55 (sus 2 5 7)

Handwritten musical notation on a five-line staff, featuring a treble clef and notes with accidentals.

Handwritten musical notation on a five-line staff, featuring a treble clef and notes with accidentals.

Handwritten musical notation on a five-line staff, featuring a treble clef and notes with accidentals.

Handwritten musical notation on a five-line staff, featuring a treble clef and notes with accidentals.

Handwritten musical notation on two staves. The top staff is in treble clef and the bottom staff is in bass clef. The notes are mostly whole and half notes, with some accidentals (sharps and flats).

b \flat b \flat b \flat b \flat

Handwritten musical notation on two staves. The top staff is in treble clef and the bottom staff is in bass clef. The notes are mostly whole and half notes, with some accidentals (sharps and flats).

Handwritten musical notation on two staves. The top staff is in treble clef and the bottom staff is in bass clef. The notes are mostly whole and half notes, with some accidentals (sharps and flats).

Handwritten musical notation on two staves. The top staff is in treble clef and the bottom staff is in bass clef. The notes are mostly whole and half notes, with some accidentals (sharps and flats).

Handwritten musical notation on two staves. The top staff is in treble clef and the bottom staff is in bass clef. The notes are mostly whole and half notes, with some accidentals (sharps and flats).

Handwritten musical notation on two staves. The top staff is in treble clef and the bottom staff is in bass clef. The notes are mostly whole and half notes, with some accidentals (sharps and flats).

b \flat b \flat

Handwritten musical notation on two staves. The top staff is in treble clef and the bottom staff is in bass clef. The notes are mostly whole and half notes, with some accidentals (sharps and flats).

E-/F-

Handwritten musical notation on two staves. The top staff is in treble clef and the bottom staff is in bass clef. The notes are mostly whole and half notes, with some accidentals (sharps and flats).

A Δ 7/C A-/B

C \sharp E F \sharp A \flat A- B

Handwritten musical notation on two staves. The top staff is in treble clef and the bottom staff is in bass clef. The notes are mostly whole and half notes, with some accidentals (sharps and flats).

Handwritten musical notation on two staves. The top staff is in treble clef and the bottom staff is in bass clef. The notes are mostly whole and half notes, with some accidentals (sharps and flats).

Handwritten musical notation on two staves. The top staff is in treble clef and the bottom staff is in bass clef. The notes are mostly whole and half notes, with some accidentals (sharps and flats).

solos B7 B \flat 7 C7 D \flat 7

Handwritten musical notation on a five-line staff. The notation includes various notes, rests, and accidentals (sharps, flats, naturals). There are some scribbles and corrections. A section on the right is labeled "last line" and "F-#".

Handwritten musical notation on a five-line staff. It includes a measure with a sharp sign and a measure with a flat sign. There are some scribbles and corrections.

Handwritten musical notation on a five-line staff. It includes various notes, rests, and accidentals. There are some scribbles and corrections.

crazy low prices 4/1/95